

---

# Driving Transformation in Home and Community Care

Alberta Association on Gerontology

October 13, 2022

Corinne Schalm

Assistant Deputy Minister

Continuing Care Division



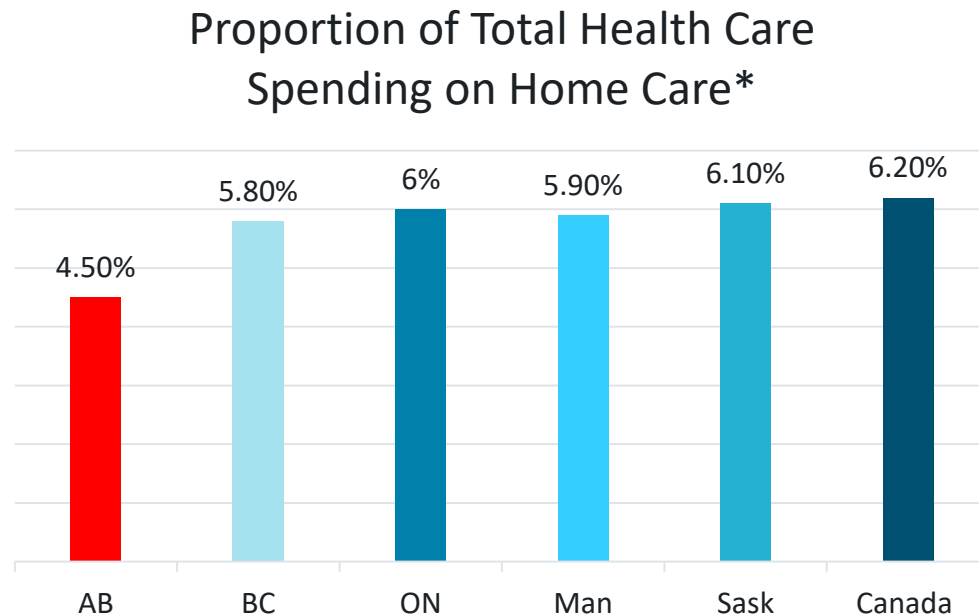
Alberta

# Barriers and Challenges to Integrated Care

---

# Barriers to Remain at Home

- Canada has proportionally fewer care staff working in HCC and spends proportionally less than many other (OECD) nations on HCC
- Across the Prairies 2% of the population had unmet home care needs in 2021, the equivalent of 90,000 people in Alberta



\*CIHI National Health Expenditure Trends, 2021: Data Tables – Open Data

\*\* Canadian average excludes territories

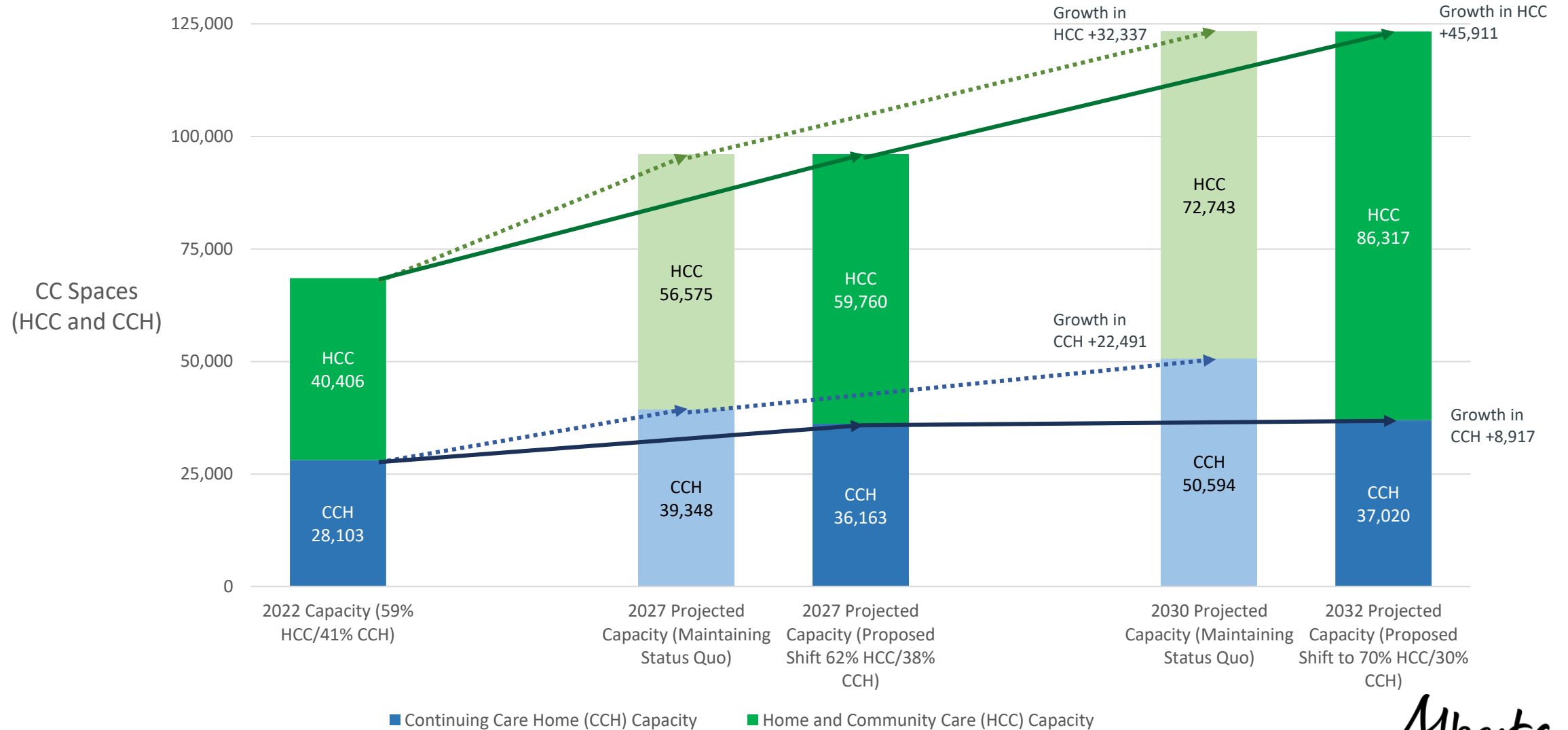
**66%**  
of caregivers incur extra expenses because of caregiving<sup>4</sup>

**39%**  
of caregivers are overwhelmed<sup>5</sup>


**26%**  
of caregivers report their health suffering because of caregiving<sup>5</sup>

**51%**  
of caregivers miss paid days of work<sup>4</sup>

# Proposed shift to home and community care vs status quo



# Approach to Improving Continuing Care Service Integration



# Continuing Care Transformation

## Shift to Care in the Community

Home and Community Care

Palliative and End-of-Life Care

Non-Medical Supports

## Enhance Workforce Capacity

Workforce Supports

Recruitment and Retention

## Increase Choice and Innovation

Innovative Home and Community Care

Small Homes

## Improve Quality

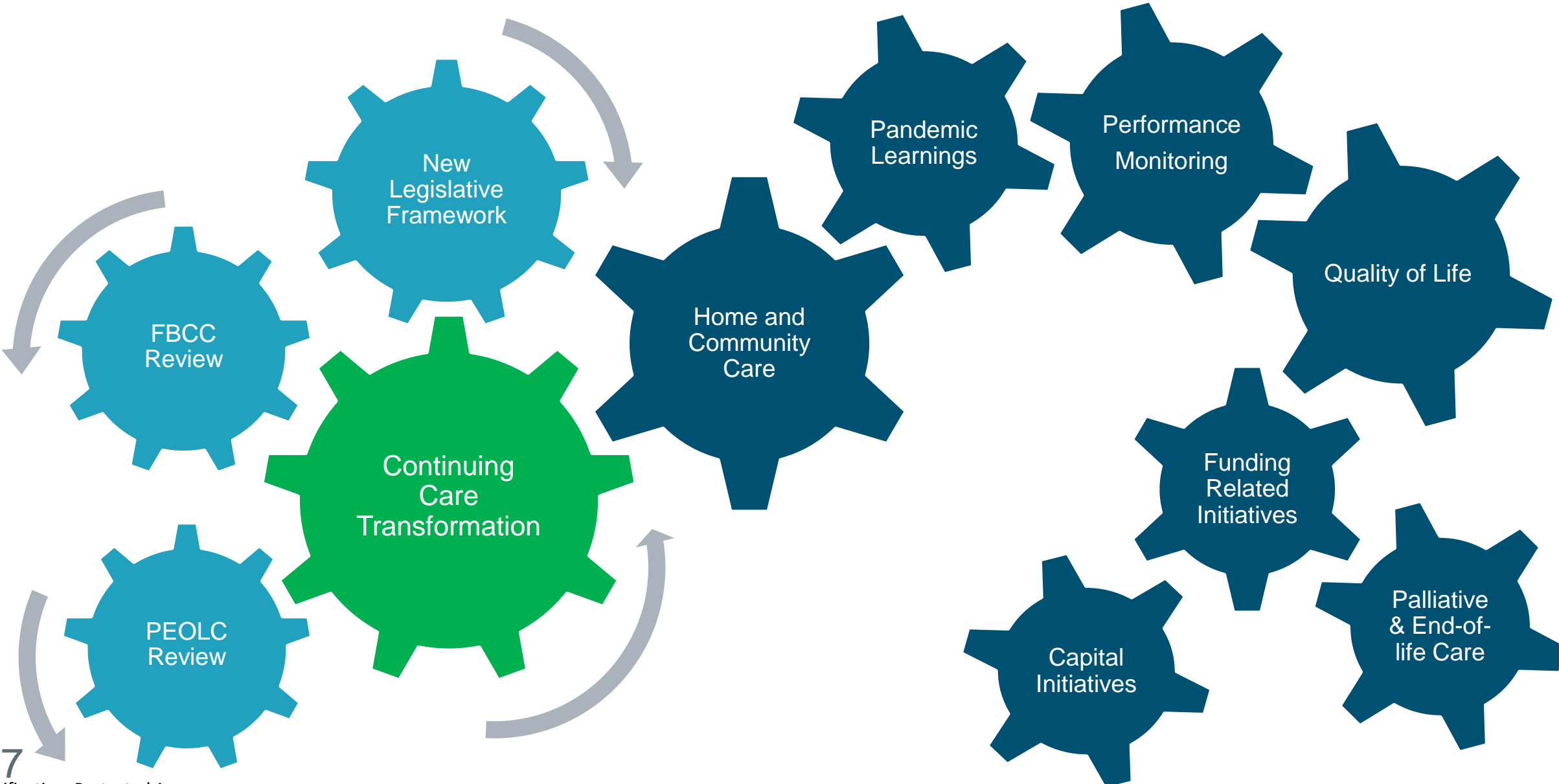
Hours of Care

Quality of Life

Pandemic Preparedness

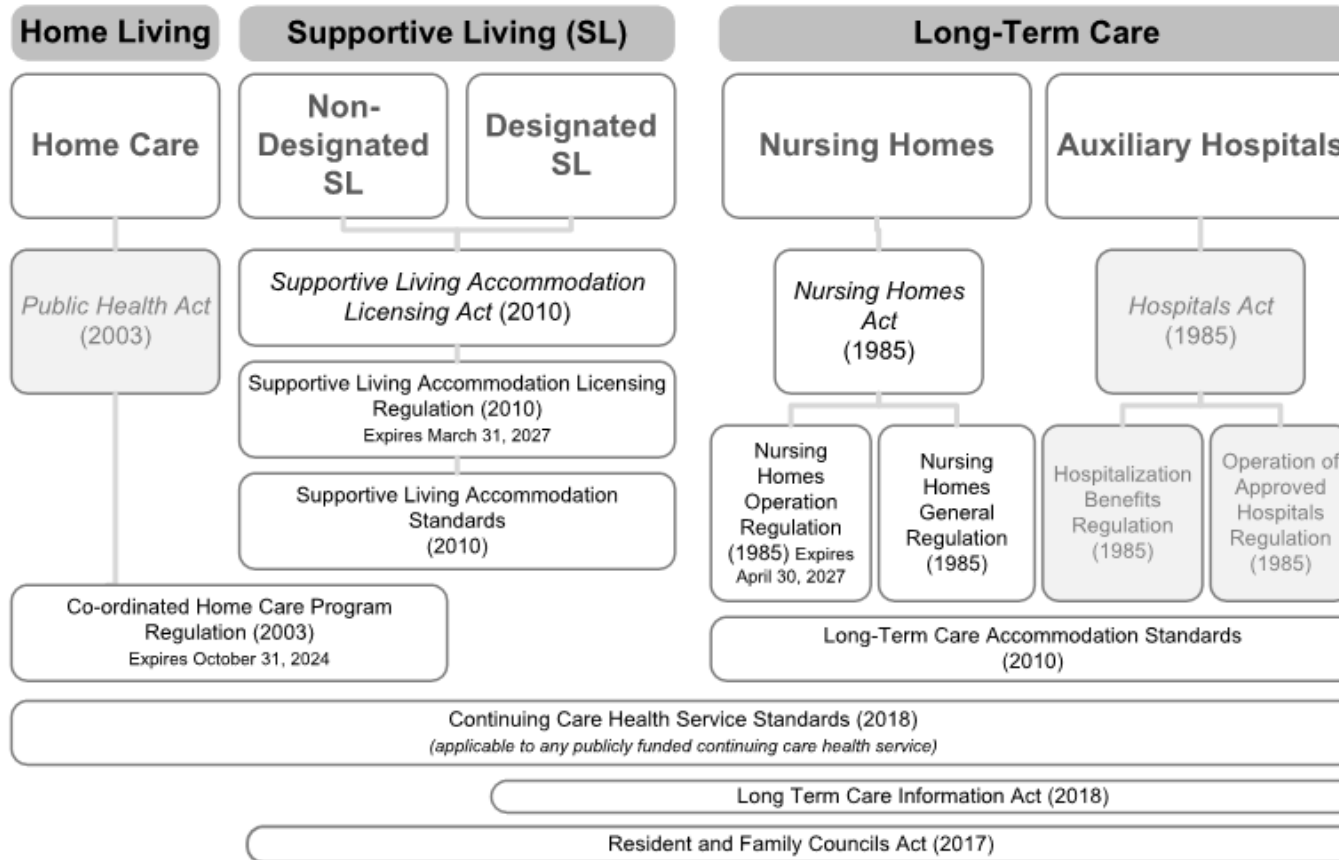
Capital Enhancement

# Continuing Care Transformation Initiatives

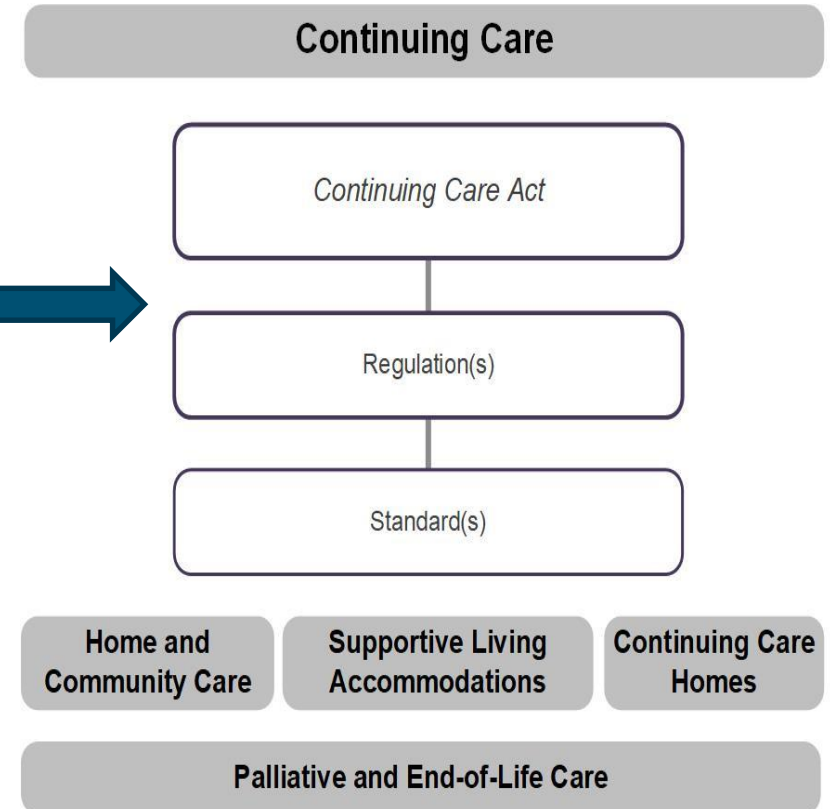


# New Continuing Care Legislative Framework

## Current Legislative Framework



## New Legislative Framework





# Moving Forward with Transformation



## Home and Community Care

# Alberta's Home Care Path Forward



Alberta's Home Care Path Forward plan seeks to:



**Increase resources for home and community care**



**Empower clients and families with more flexibility and choice**



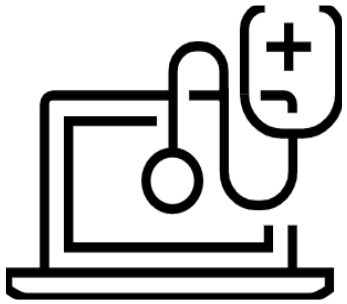
**Make it easier to access and navigate services**



**Better integrate healthcare and social supports in community**

# Current Home & Community Care Initiatives

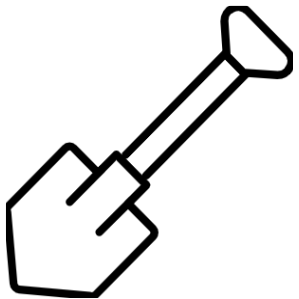
---



Enhancing  
Client-Directed Care  
Options



Fostering  
Innovation



Improving Access  
to Non-medical  
Supports

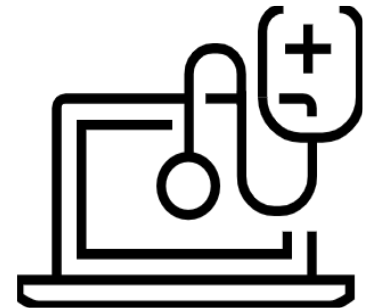


Expanding Access to  
PEOLC Supports

# Enhancing Client-Directed Care (CDC)

---

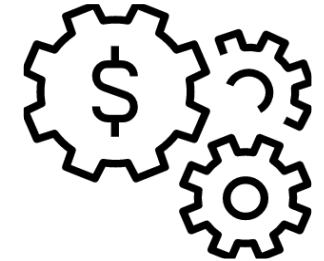
- These options enable clients to choose their own care provider, resulting in:
  - More flexibility and control
  - Ability to negotiate directly on the things that matter most to the person, and to change providers if they are unsatisfied
- Implementation of Client-Directed Home Care Invoicing option
  - Over 350 home care clients enrolled in the Edmonton Zone
  - Will not impact the availability of other existing CDC options such as Self-Managed Care



# Fostering Innovation

---

- Modernize Alberta's approach to contracted home care services, through:
  - RFEIOIQ to identify options for innovation,
  - Expanding congregate living environment contracts
  - Strengthening accountability
- Targeted areas for innovation include for eg:
  - Persons living with dementia,
  - Clients with complex needs,
  - Addiction and mental health clients
  - Clients receiving alternate levels of care

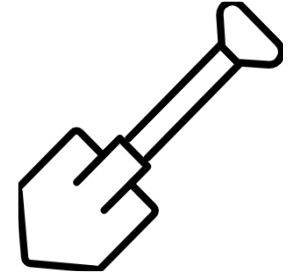


# Access to Non-Medical Supports

---

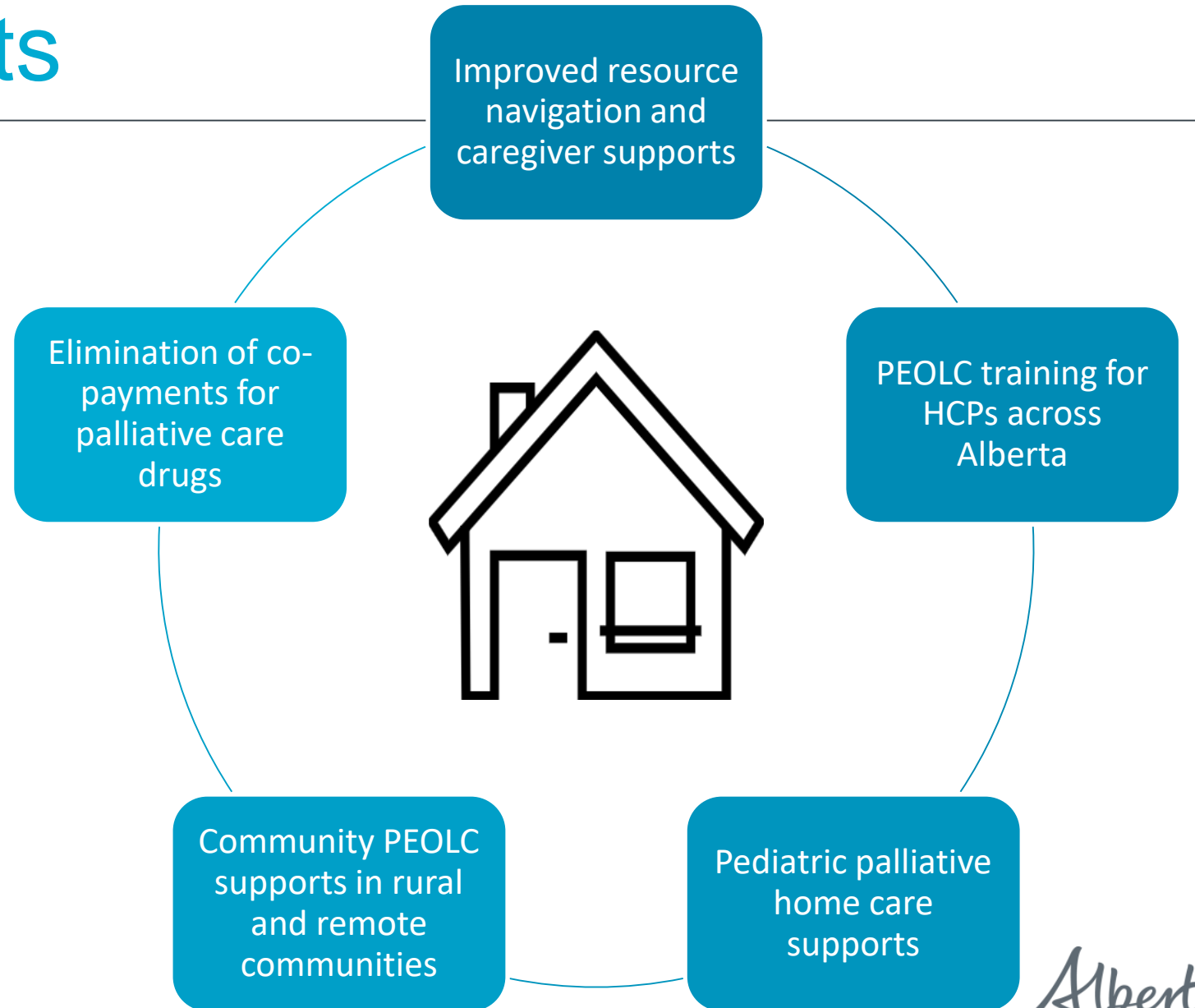
New funding for:

- United Way Calgary to increase access to, and delivery of, non-medical supports for seniors.
- Edmonton Seniors Coordinating Council to help home care clients easily navigate and access a wider range of supports in their community.



# Expanding Access to Community Based PEOLC Supports

- \$20M to improve access to palliative and end of life care



# Future Innovation Considerations

---

## **Explore opportunities for continued home and community care innovation including, but not limited to:**

- Continuing care homes as community hubs (FBCC Review #14);
- Client-directed care models in facility/residential care settings (FBCC Review #23);
- Enhanced integration between home and community care and primary care;
- Increased palliative and end-of-life care supports to support Alberta to remain in their communities of choice; and
- Different ways of delivering care such as who provides the care and location of care



# Next Steps

---

- **Fall 2022**
  - Expansion of HCC Initiatives (Client Directed Care, RFEIOQ, Social Prescribing and Palliative and End of Life Care projects)
  - External stakeholder engagement on regulation and standards and implementation
- **Spring 2023**
  - New Act and regulations and Phase 1 Standards in effect
  - Implementation support for new regulations and updated standards
  - Assess and develop new standards (e.g. home care and hospice settings)
- **2023 and Beyond**
  - Home and community care expansion and updated contracts
  - Additional innovation opportunities to advance home and community care